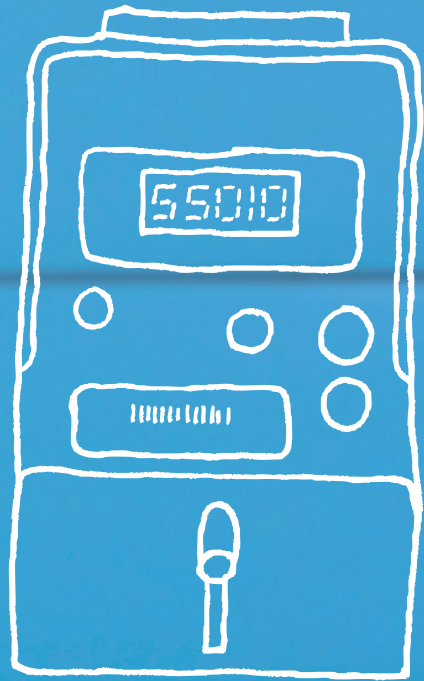


Clear investment. Pure energy.



HOW TO READ YOUR ELECTRICITY METER

Your electricity meter is a precision instrument, certified before its installation, so you can be confident of its accuracy.

Reading your own meter is straightforward. Your type of meter depends on what tariff you are on. There are basically two types of meter: the digital meter and the electronic meter.

The digital meter can be single register for our General Domestic Tariff or a dual register for Economy 7. Two single-register meters can be used side by side for our Economy 20 Tariff. The electronic meter registers up to three rates and is used with our Comfort Heat Tariff and sometimes our Economy 20 Tariff.

What is a unit of electricity?

When you read your meter the figures represent the

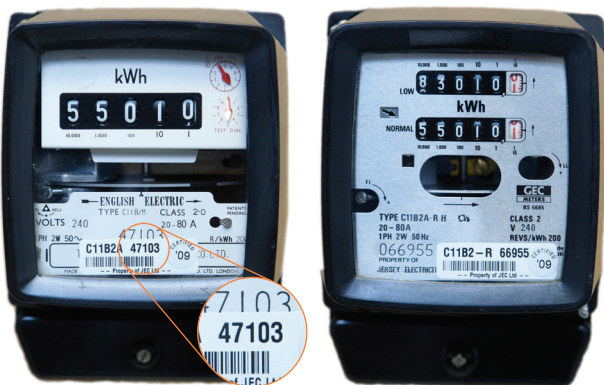
number of electricity units you have used. A unit is one kiloWatt hour (kWh) which equals one kiloWatt (1kW) of power expended over one hour. For example:

- A 1kW (1,000 Watts) appliance in use for one hour = 1 unit (1kWh)
- A 3kW (3,000 Watts) appliance in use for one hour = 3 units (3kWh)
- A 100W lamp in use for 10 hours = one unit (1kWh).

Single-register digital meter

The number of units used is shown as a row of figures on the front of the meter. If and when the total number of units recorded exceeds 99,999, the meter starts again at zero, like the mileage indicator on a car.

To read a single-register digital meter, simply write down the numbers shown from left to right, ignoring the last small numbers as these are just fractions of a unit. Two single-register meters can be used with our Economy 20 Tariff. One indicates units used on the Economy 20 Rate 2 and the other registers units on the General Power and Lighting Rate 1. You will need to write down both readings along with each meter number (shown on the picture below).



Single-register digital meter with meter number highlighted

Dual-register digital meter

Dual-register digital meter

The dual register meter, used with our Economy 7 Tariff, has two rows of figures. The top row, marked LOW, represents the units used on the cheaper Night Rate 2. The bottom row, marked NORMAL, indicates the units used on the Day Rate 1.

Read both sets of figures from left to right, again ignoring the last smaller figure in each case.

Three-rate electronic meter

The three-rate electronic meter is used with our Comfort Heat Tariff and records three separate rates: The Comfort Heat units on Rate 3, Low Period units on Rate 2 and Normal Period units on Rate 1.

For more information, our Customer Care Team is available to help you 7.30am to 8pm Monday - Saturday.

Please call 505460 or visit www.jec.co.uk

This type of meter can also be used with Economy 20 to record two rates: Economy 20 Rate 2 and General Power and Lighting Rate 1.

Although the electronic display shows only one set of figures at a time, you can access the other rates by pressing the blue button. (The orange button does not perform any operational function.)

The figures showing will always be at the current tariff depending on the time of day. Therefore, to read your meter, press the blue button to show the following sequence of displays:

Display screen readings (Comfort Heat)

Normal display Units used on tariff currently being charged

- Press once The current time
- Press again Date
- Press again Test display
- Press again Normal (Rate 1) units used
- Press again Low Period (Rate 2) units used
- Press again Comfort Heat (Rate 3) units used



Three-rate electronic meter

Read all three rate displays from left to right, again ignoring the last two smaller numbers after the decimal point (.00).

Display screen readings (Economy 20)

- Press once The current time
- Press again Date
- Press again Test display
- Press again General Power and Lighting (Rate 1)
- Press again Economy 20 (Rate 2)



The Powerhouse, PO Box 45, Queens Road
St. Helier, Jersey, JE4 8NY

Tel: 505460
Fax: 505565
email: jec@jec.co.uk

