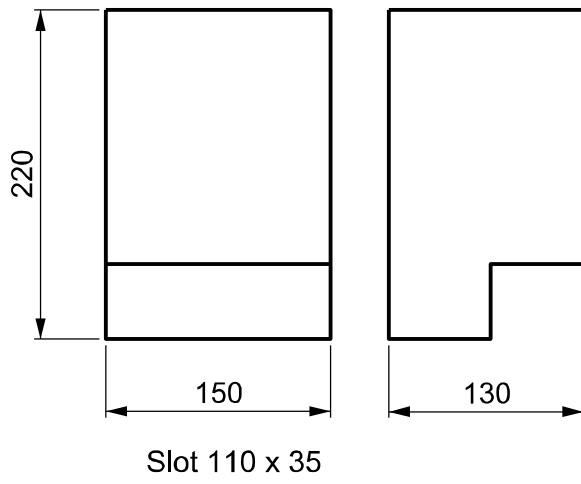
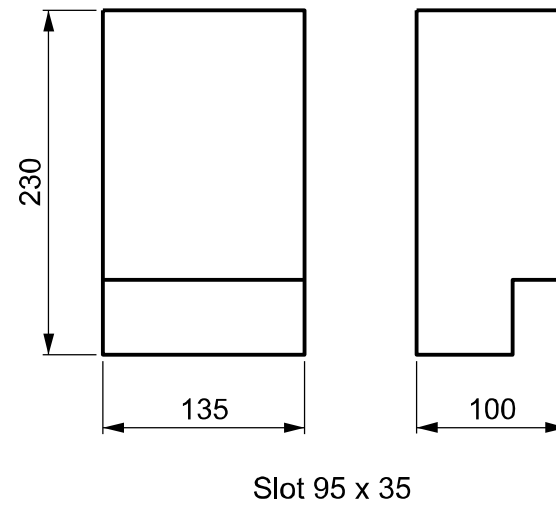


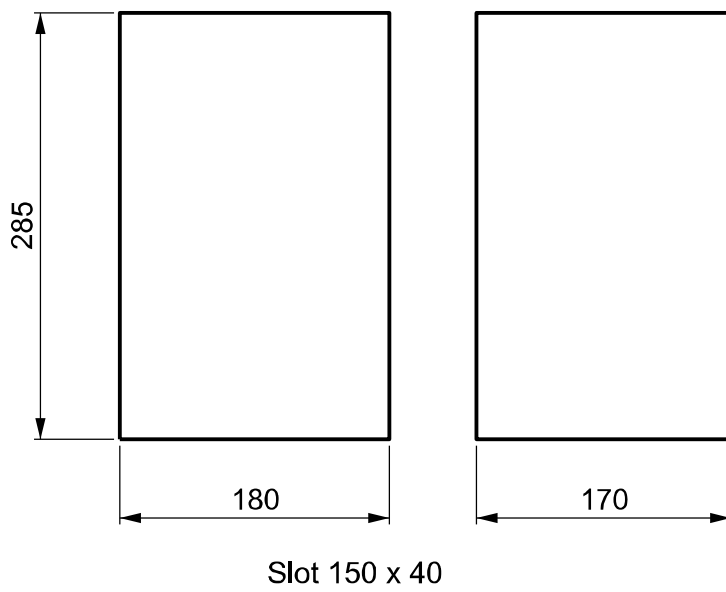
Single phase meters.  
(General tariff)



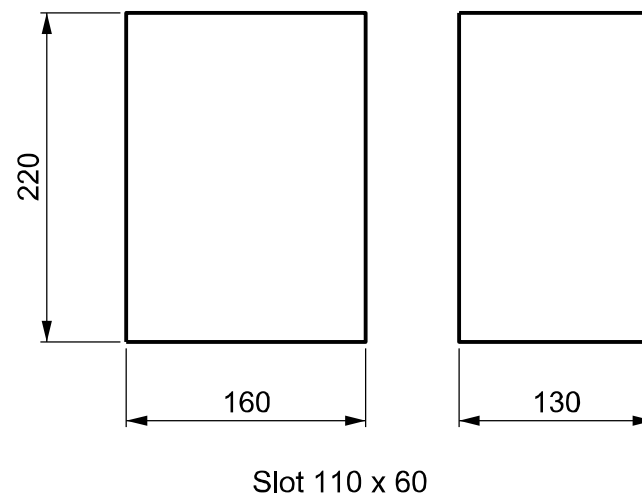
All cyclos



Three phase metering



Single phase meters  
(Heating tariff)



Allow 20mm clearance above and on each side of meter

If grommet strip is used, slot to be 5mm from the back of the trunking.

Advised slot sizes are measured from the back of the trunking.

All cables must be run through same slot

Cable to be double insulated unless run through trunking

NB All measurements in millimeters

Rev	Date	Description	Drn	Appd
B	21-05-2015	Meters removed and minor mords	TB	DP
A	15-1-2004	Diagram revised	AD	
-	4-7-2003	Original Issue	AD	

Title

**STANDARD  
METER SIZES**

The Intellectual Property Rights (IPR) ie. Patents, Copyright, Trade Secrets, Design Rights etc., remain strictly the property of 'The Jersey Electricity Company Ltd.' and may not be copied and / or reproduced in any form without their 'Express Permission'.



Jersey Electricity plc

The Powerhouse PO Box 45 Queen's Road St. Helier Jersey JE4 8NY  
Tel - 01534 505460 Fax - 01534 505565 e-mail - jec@jec.co.uk

Drg. No. **80-N21**

Revision **B**