

Clear investment. Pure energy.

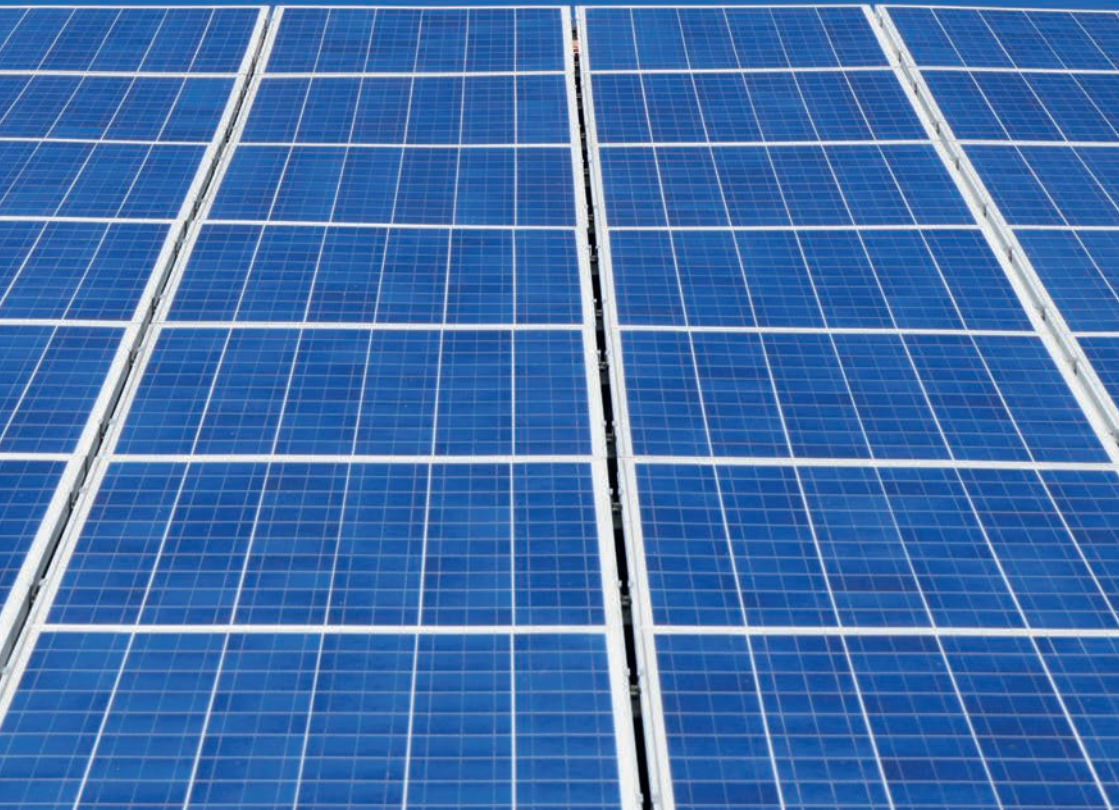


BUY BACK TARIFF COMMERCIAL

1 MAY 2019



Jersey Electricity
Energy for everyone



BUY BACK TARIFF AND STANDBY CHARGE

This tariff is designed for Commercial customers with Embedded Generators (EmGs) approved by Jersey Electricity in accordance with Engineering Recommendations G83/2 or G59/3 connected in parallel to JE's network and which have the capacity to sell excess units back to JE.

An EmG is connected to a customer's supply and provides electricity for onsite use and also has the capability to export back to the grid. JE provides the remainder of the electricity demand of the site, which includes a backup service when the EmG is not operational.

Types of generators

Typical examples of embedded generators that may qualify for our Buy Back Tariff include:

- Wind turbine
- Photovoltaic (solar panels)
- Combined heat and power systems (CHP)

Embedded generators connected in parallel to our network must comply with either Engineering Recommendations G83/2 or G59/3 depending on the rating of the generator. For further advice contact us on 505460.

Buy Back Rate 6.60p a unit

For all units exported to the Jersey Electricity network during anytime of the day or night from 1 April 2019 up to a facility size of 50kWp 3 Phase / 20kWp Single Phase. Installations above 50kWp will be reviewed on a case-by-case basis.

Standby Charge

Following the conclusion of a States commissioned independent review by NERA into the Standby Charge for Commercial customers installing embedded generation (EmGs) while requiring grid backup services, Commercial embedded generators, specifically with solar PV, connected in parallel with Jersey Electricity's network after 1 May 2019 and those with solar PV installations already paying an availability charge before this date will incur a Standby Charge of £3.25 (incl GST) (£3.10 excl GST) per kW peak per month for installations up to 50kWp. Existing systems in service as at 1 May 2019 will be grandfathered and exempt from the charge until change of ownership or facility upgrade. Installations above 50kWp will be assessed and charged on a case-by-case basis on application as they will require bespoke connections into the grid.

Typical kW peak refers to the maximum rating of the EmG (wind turbine / photovoltaic / combined heat and power systems).

The Standby Charge does not apply to export-only generators or those installed as backup in case of failure to grid supplies.

Commercial installations are determined by their current designation on Jersey Electricity's Customer Database. However, Jersey Electricity reserves the right to apply the Standby Charge for installations that clearly fall within the bounds of commercial scale whatever the customer/premise designation.

Daily Service Charge

A Daily Service Charge applicable to the tariff applies.

Standard Commercial

Single Phase	16.70p (15.90p)
Three Phase	36.50p (34.76p)



Single Phase	19.80p (18.86p)
Three Phase	44.00p (41.90p)
Standard Maximum Demand	96.90p (92.29p)
E7 Maximum Demand	108.70p (103.52p)

Prices shown in bold are inclusive of GST.
Prices alongside in brackets reflect our underlying tariff.

The Standby Charge and Buy Back rate will be reviewed regularly and are subject to change at JE's discretion.

For more information, please call our
Customer Care Team on 505460
or visit www.jec.co.uk



The Powerhouse, PO Box 45, Queens Road,
St Helier, Jersey, JE4 8NY
Tel: 505460
Fax: 505565
Email: jec@jec.co.uk



CBB0519