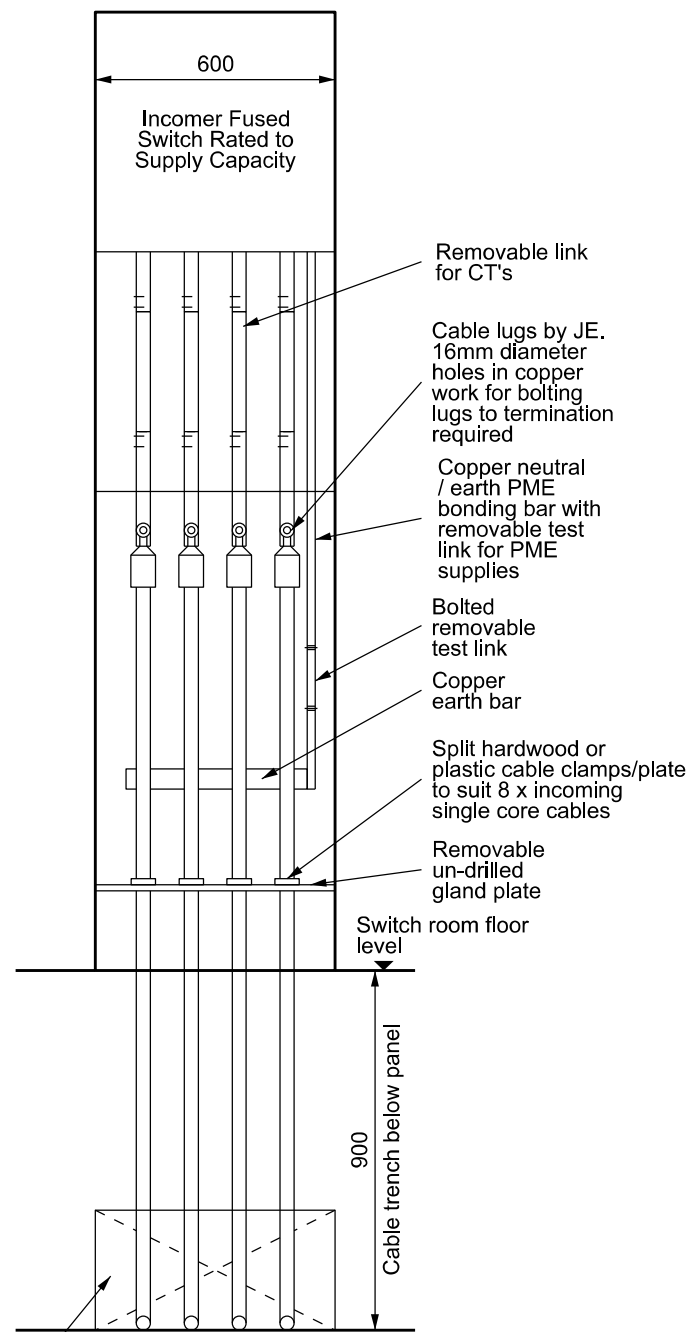


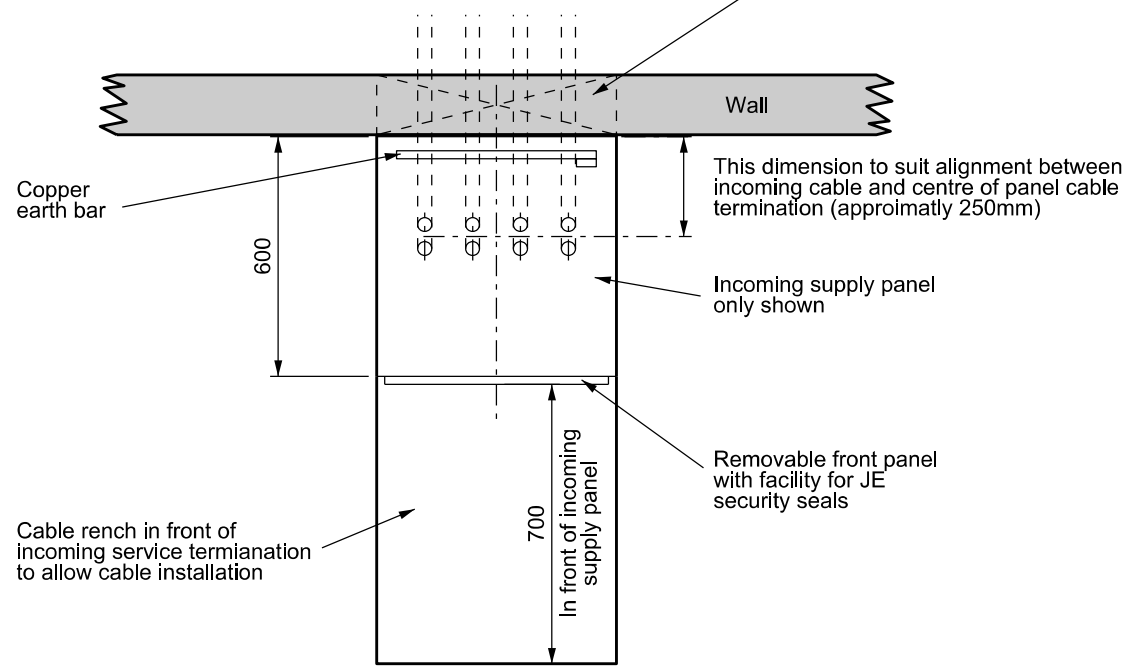
Side Elevation



Front Elevation

850mm Minimum bending radius for incoming supply cable

600mm Wide x 300mm high cable slot through switch room wall at base of cable trench

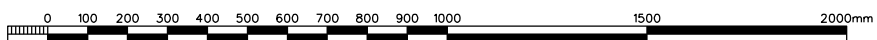


Plan

Notes:

- 1) Electrical contractor to submit preliminary specification to JE for approval prior to installation.
- 2) Phone line and telephone point required for modem to enable remote meter reading, unless otherwise stated.

C.T's by JE  
 400-600 Amp I.D = 55mm O.D = 98mm D = 38mm  
 800 Amp I.D = 65mm O.D = 110mm D = 30mm



Scale 1:20 - A3

Rev	Date	Description	Drawn	Appd
B	22/10/12	Cable dimention increased to 35mm	TSB	TB
A	12/10/12	Diagram updated	TSB	TB

Title  
**Typical Intake / Metering Incoming Supply General Arrangement For Three Phase 400 - 800 Amp PME LV Metered Supply To Consumers Switchboard. (Bottom Entry Via Cable Tench)**

The Intellectual Property Rights (IPR) ie. Patents, Copyright, Trade Secrets, Design Rights etc., remain strictly the property of 'Jersey Electricity Company plc' and may not be copied and /or reproduced in any form without their 'Express Permission'.



**Jersey Electricity plc**

The Powerhouse PO Box 45 Queen's Road St. Helier Jersey JE4 8NY.  
 Tel - 01534 505000 Fax - 01534 505011 e-mail - jec@jec.co.uk

Drg. No. **060-N21**

Revision **B**